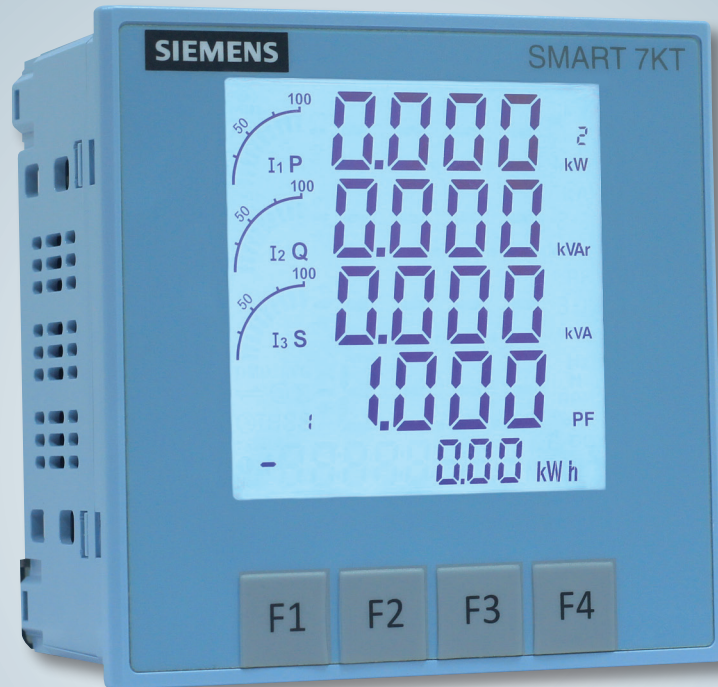


SIEMENS

Ingenuity for life



SMART 7KT Multi Function Meter

Smart metering solution for
all your load feeders

www.siemens.co.in

With the increasing awareness of Energy conservation, more and more electrical installations, be it industrial, residential or commercial buildings, require precise and reliable energy monitoring.

Multifunction Meters have evolved from simple measuring devices to a critical component of Energy Management Systems.

The SMART 7KT Multifunction Meter is the latest addition to the wide portfolio of Measuring Devices and Energy Management Software from Siemens.

The SMART 7KT can be deployed in each and every load feeder and can measure all the electrical parameters accurately.

Thanks to its integrated communication capability it can be easily and cost effectively integrated into Energy Management Systems thereby increasing the transparency of energy consumption across the entire plant.

General Features

| | |
|---------------------|--|
| MLFB | 7KT0310 |
| Mounting Type | Panel |
| Terminal | Screw Type |
| Dimension | 96 x 96 x 50 mm |
| IP Protection | IP54 On Front When Installed |
| Display Type | LCD with Bar Graph display |
| Temperature | -20° to +60° C |
| Humidity | 0 % to 95 % without moisture consideration |
| Password Protection | Yes |

Measuring Range

| | |
|-------------------------|------------------------------------|
| Nominal Current | 3 x 0 - 5 A with max. 20% Overload |
| CT Primary | 1 A - 10000 A |
| CT Secondary | Selectable - 1 A or 5A |
| Input Voltage L-L / L-N | 480 V / 276 V |
| Rated Frequency | 50/60 Hz |
| Network | 1P2W, 3P3W, 3P4W |

Control Supply

| | |
|---------------------|--------------------------|
| Input voltage range | 95 – 240 V AC $\pm 10\%$ |
| Consumption | 8 VA max |
| Frequency | 45 – 65 Hz |

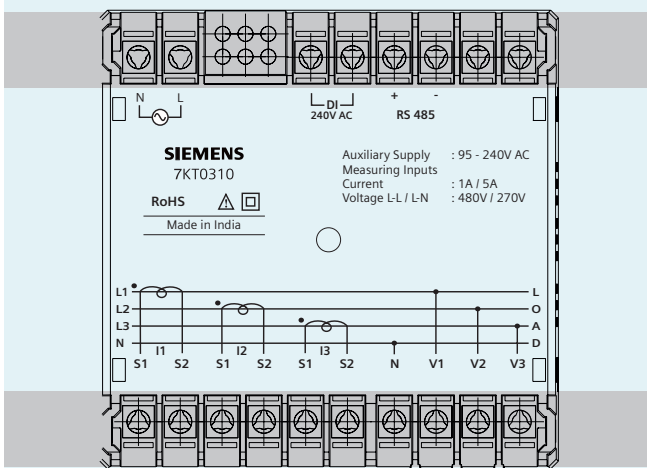
Display Parameters & Range :

| | |
|--|------------------------------|
| Voltage (Phase and Average) | Yes |
| Current (L1,L2,L3) | Yes |
| Frequency | Yes |
| Neutral Current (Instantaneous on Display) | Yes |
| % THD - I/V | Yes |
| Power (Active / Reactive/ Apparent) | Yes |
| Min / Max Values Of Power | Yes |
| Power Factor (Phase wise & Average) | -1.00 to + 1.00 |
| Phase Angle | Yes |
| Energy (Active, Reactive, Apparent) | Yes (Instantaneous, Class 1) |
| Maximum Demand | Yes |
| ON Hour Counter | Yes |
| Pollution Degree | II |
| Installation Category | III |

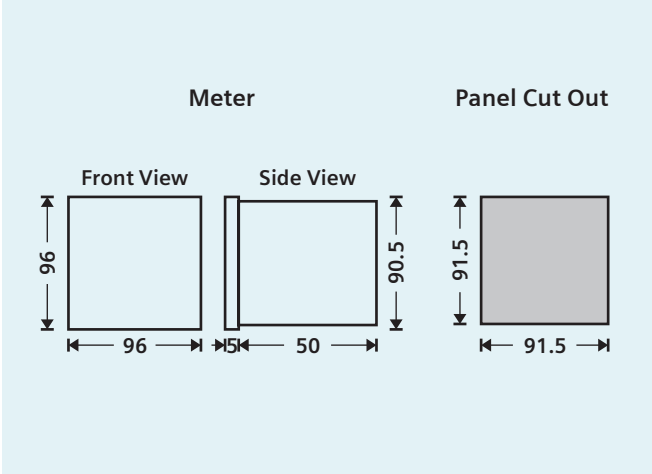
System Communication

| | |
|--|---------------------------------------|
| Communication Interface | RS 485 Interface, Modbus RTU Protocol |
| Digital Input (DI) / Digital Output (DO) | 1 DI |

Terminal Connection



Dimensions (in mm)



Siemens Ltd.
 Digital Factory
 Control Products
 R&D Technology Centre
 Kalwa Works
 Thane Belapur Road, Thane - 400 601
 Fax: +91 22 33265627
 For more information contact toll free 1800 209 1800
 E-mail: lvsgmktg.india@siemens.com

XX-XXX-XXX
 (This replaces DF-CP-7KT-3006-2017)

Customer Care Toll free no. 1800 209 0987

Email: ics.india@siemens.com

www.siemens.co.in

Product upgradation is a continuous process. Hence, data in this flyer is subject to change without prior notice. For the latest information, please get in touch with our Sales Offices.